



## Thank you for choosing this product.

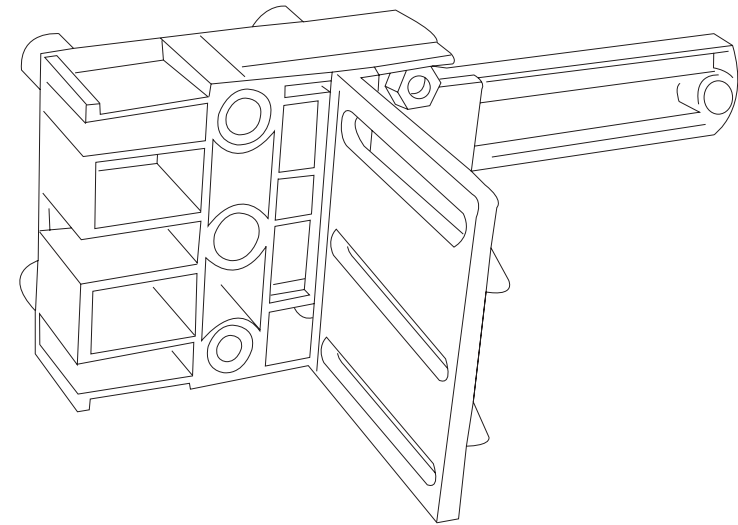
Silverline Tools Ltd. guarantees this product to be free of defects in material & workmanship forever. Any defective product returned, with original receipt, will be repaired, replaced or refunded at our discretion. We do not refund carriage. This guarantee does not cover damage caused by abuse, misuse, modification, accident or fair wear & tear.  
Your statutory rights are not affected.

If you experience a problem, return the product direct to us, with the original receipt at :

**Silverline Tools Limited**  
**PO Box 2988**  
**Yeovil**  
**BA21 1WU**

We do not refund carriage. This guarantee is for Great Britain only and does not affect your statutory rights. As you would expect fair wear and tear are not covered.

**[www.silverlinetools.co.uk](http://www.silverlinetools.co.uk)**

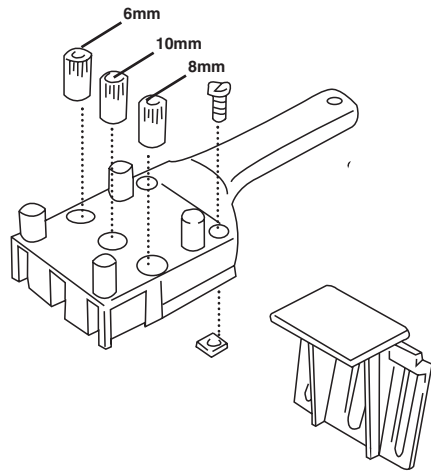


## Users Manual Dowelling Jig

Product Code 508819



# Basic Dowelling Jig Operation



## OPERATING INSTRUCTIONS

Figure 1 & 2: Mark the positions of the board in relation to each other (X) and identify the boards with letters A & B.

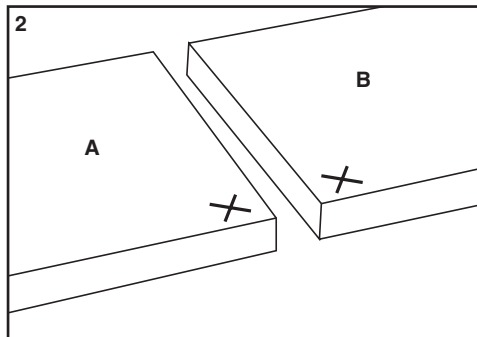
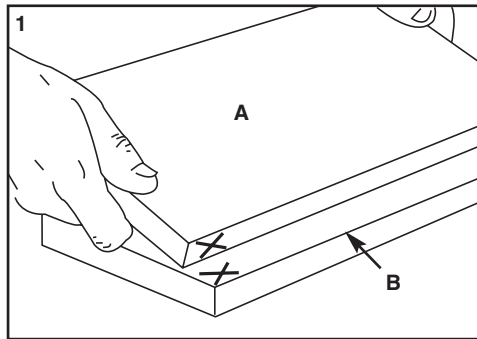


Figure 3 & 4: Work On Board A for all dowel joints. Clamp board A to the workbench.

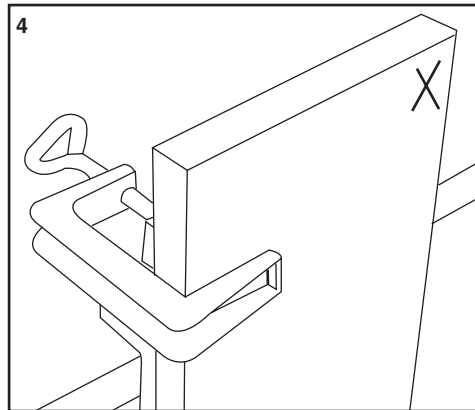
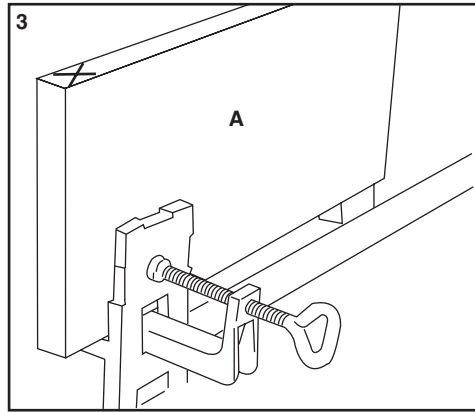


Figure 5: Adjusting the drilling depth on board A: Dowel Lengths (Board thickness of B 5mm). For end-grain joints half the dowel length. Use a drill bit with a depth stop.

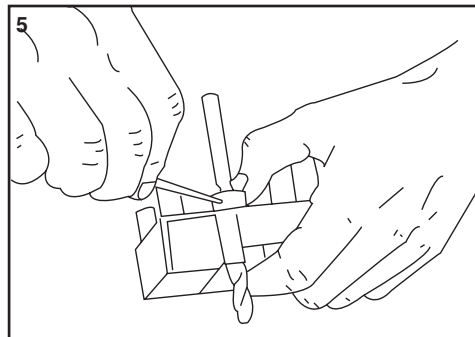


Figure 6, 7 & 8: Drill the holes in board A. Ensure that the centre pin is pushed firmly against the board by pressing the handle (see direction of arrow in Figure 8). Also ensure that the manual dowel locator is placed level on the edge. **Important:** First insert the drill bit in the drill bush and then switch on the power drill.

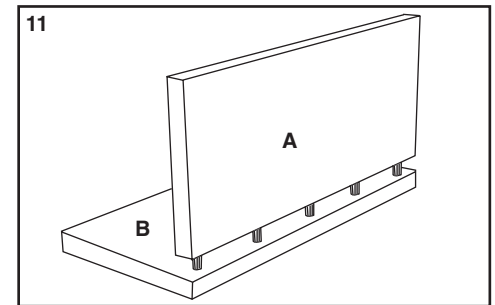
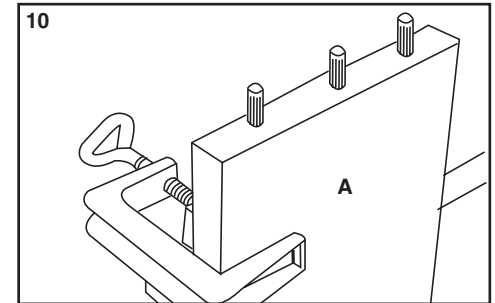
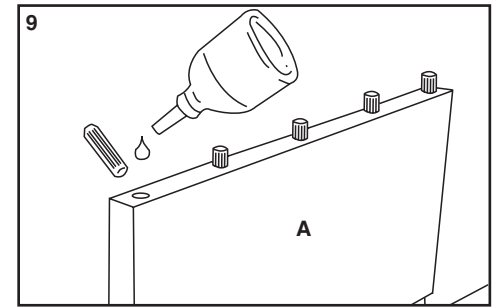
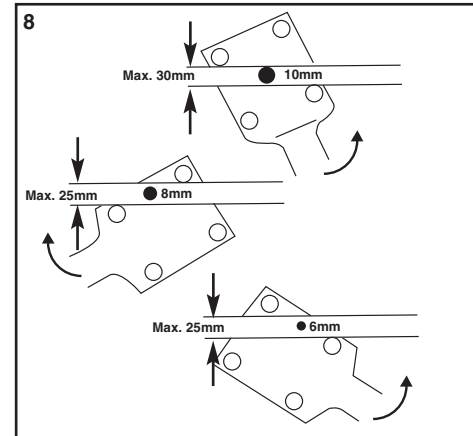
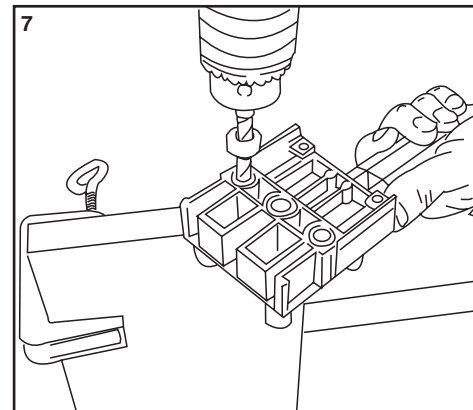
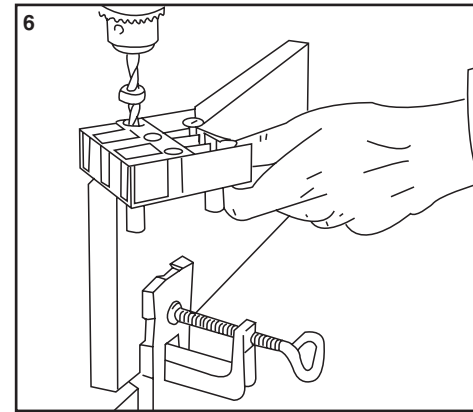
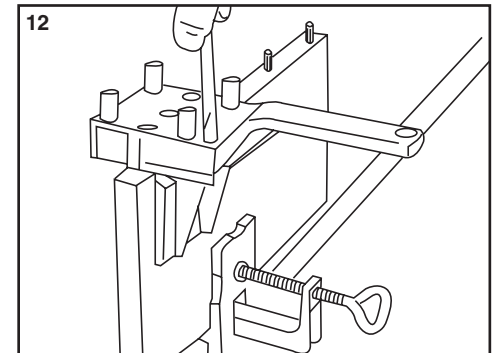
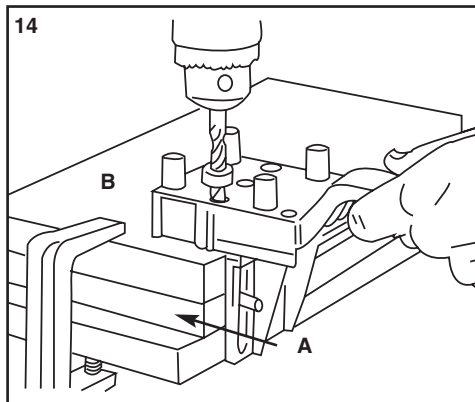
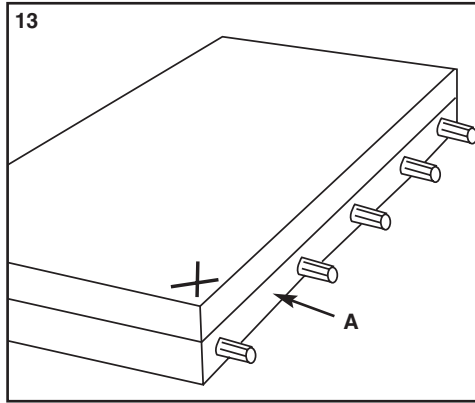


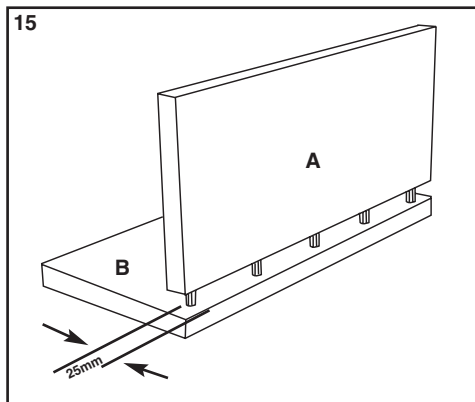
Figure 12: Place the dowel locator on a dowel in board A. Push the angle fence from the handle side into the guideway until it rests firmly against the board. Finally tighten the clamping screw.



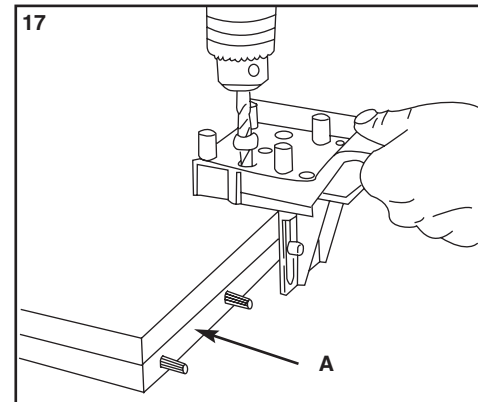
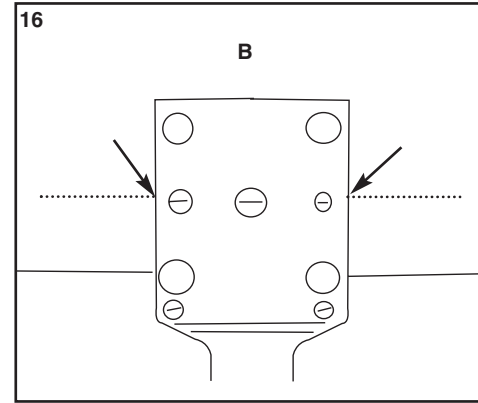
**Figure 13 & 14:** Place board **B** in a desired position on board **A** and clamp to the workbench.  
**Important:** The depth stop must be re-adjusted (board thickness 5mm). Place the dowel locator over the corresponding dowel of board **A** in such a manner that the angle fence rests firmly against the board and drill.



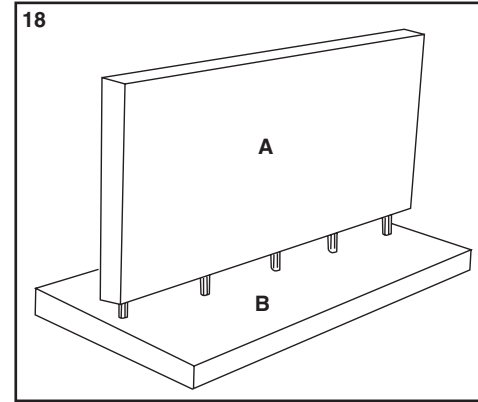
**Figure 15:** The distance of the dowel from the edge is maximum 25mm.



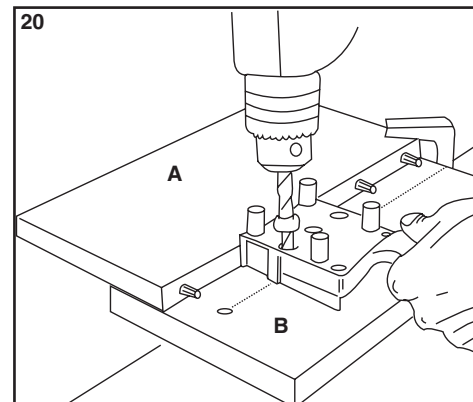
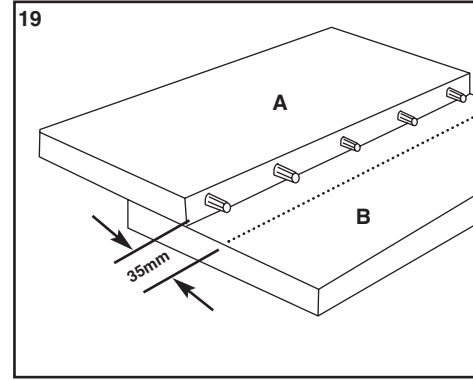
**Figure 16 & 17:** Place the board **B** in the desired position on board **A** and clamp firmly. Draw a centre line for the dowel holes on board **B**. Place the dowel locator with the side centre marks on the centre line, push the angle fence against board **B** and clamp. Then drill as shown in **Figure 14**.



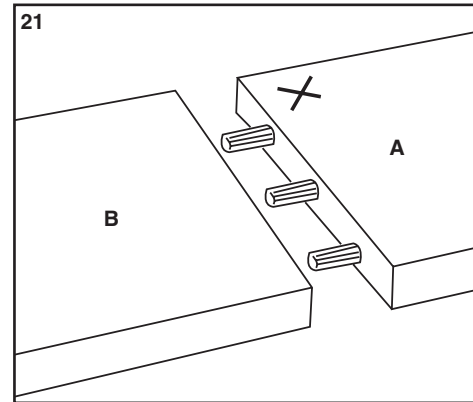
**Figure 18:** T-Joint.



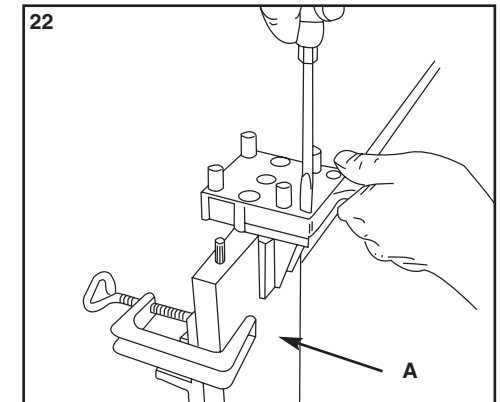
**Figure 19 & 20:** Draw a centre line for the dowel holes on board **B**. Clamp board **A** at a distance of 35mm from the drawn line.  
**Important:** The depth stop must be re-adjusted (board thickness 5mm). Now place the dowel locator with the corresponding guiding groove over the dowel. When drilling ensure that the centre marks are aligned with the centre line.



**Figure 21:** End-grain joints.



**Figure 22:** Place the dowel locator on a dowel in board **A**. Then push the angle fence from the handle side into the guideway until it rests firmly against the board. Finally tighten the clamping screw.



**Figure 23 & 24:** Clamp board **A** & **B** in such a manner that the marks are visible. Push the dowel locator with the corresponding guiding groove over the dowel until the angle fence rests firmly against the board and then drill.

